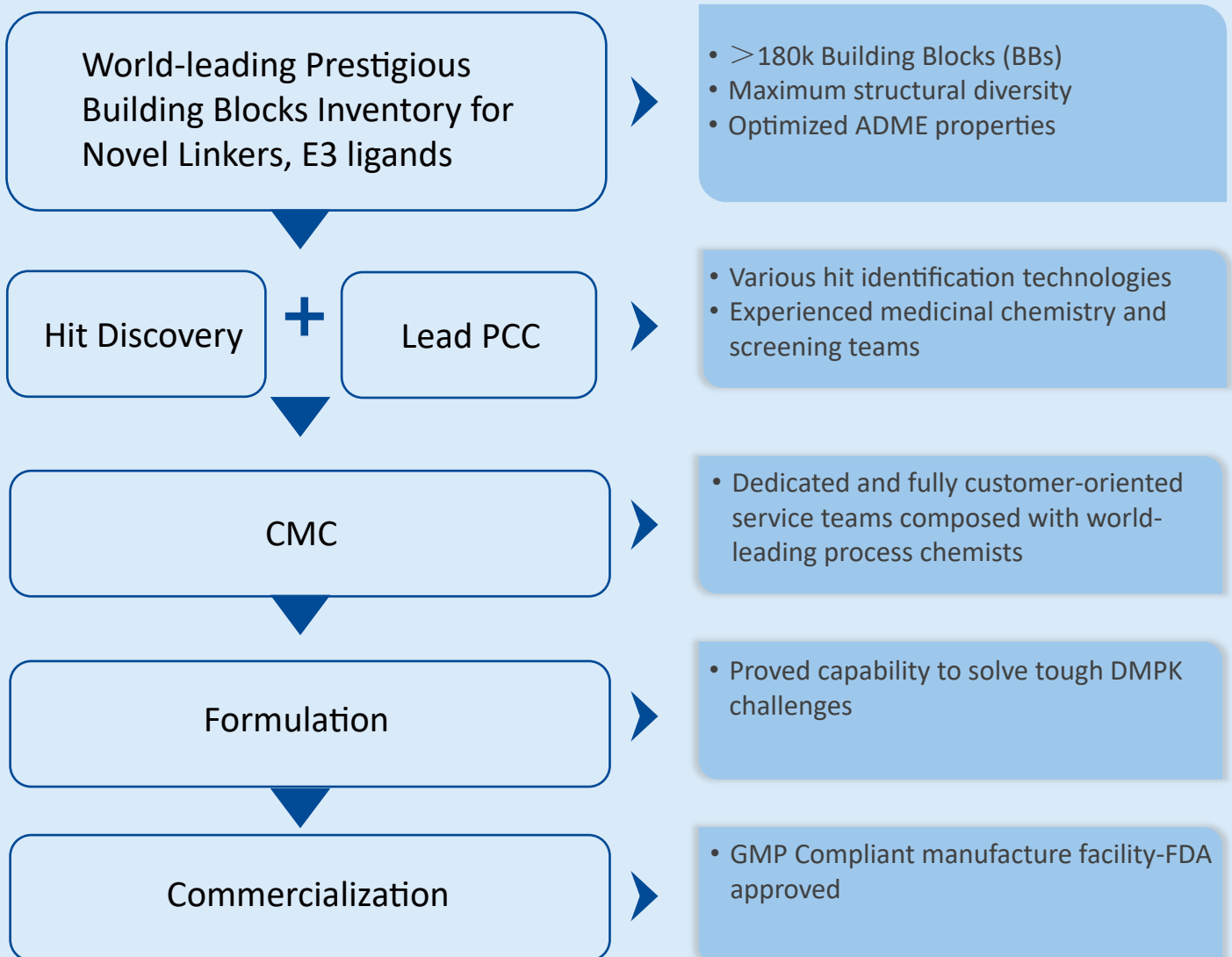


PROTAC Capability at PharmaBlock

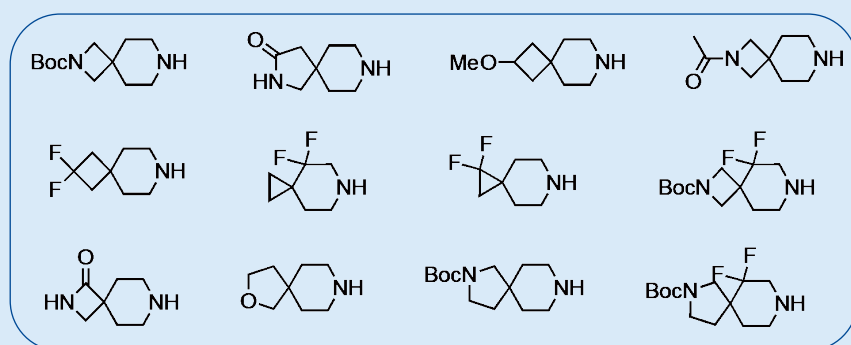
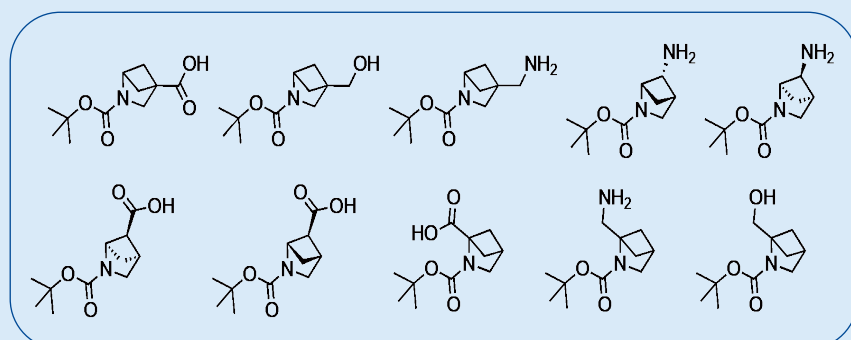
From hits to clinical candidates to commercial products



Building Blocks to Inspire and Accelerate PROTAC Discovery

- Efficient linker for optimal degradation, selectivity, ADME properties
- PB's prestigious BB collections significantly enhance efficiency and success rate

Unique Spiro, Bridge ring BB collections for accurate confirmation control and ADME optimization

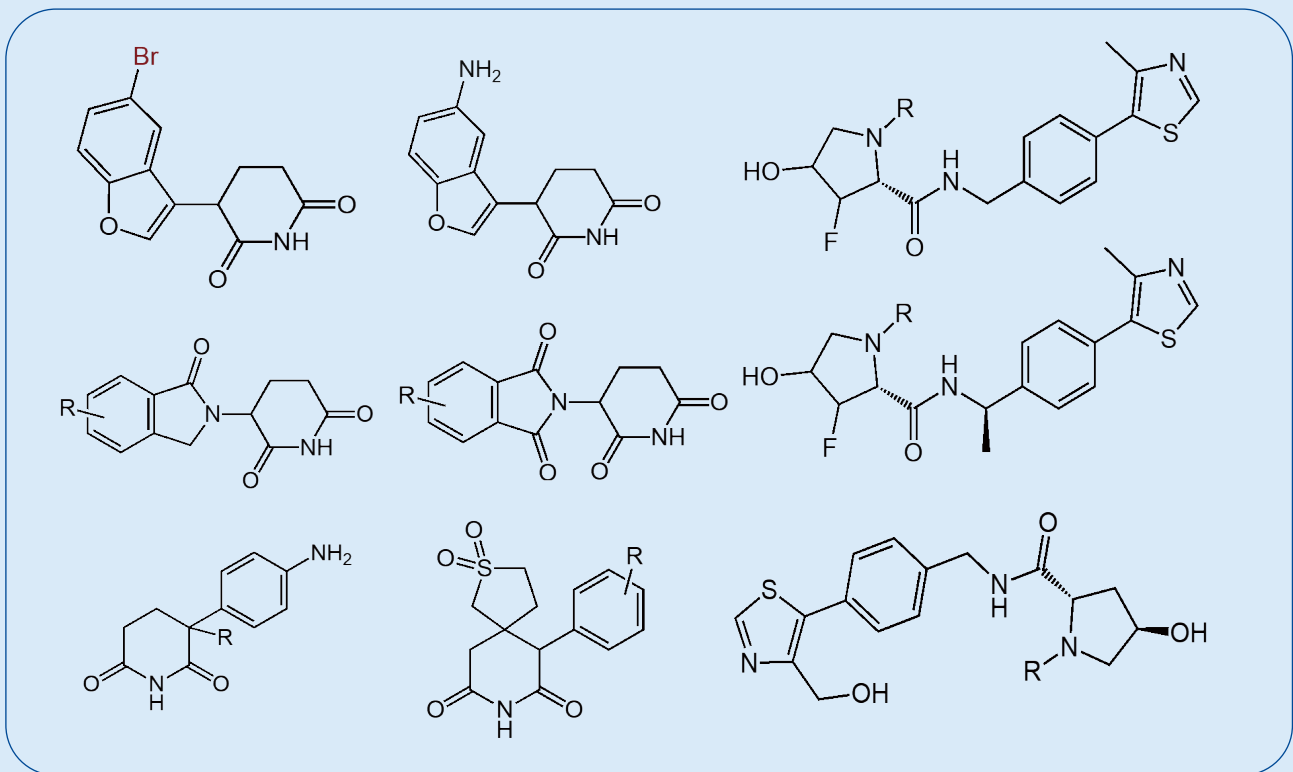


Exit Vector	Availability
-COOH	> 200
-OH	> 200
-NH2	> 200
Alkyl	> 200
Azide	> 100
-X	> 100

Wide Selection of CRBN and VHL Ligands

- 2500+ / 700+ of CRBN/VHL ligands designed, respectively
- One of the largest collections for novel PROTAC design and screening
- Grams to hundreds of kg scale in stock for most commonly used ligands

Enabling prompt material supply for early discovery and development



Early Discovery to PCC Identification

New Ligand
PROTAC Identification

Hit to Lead

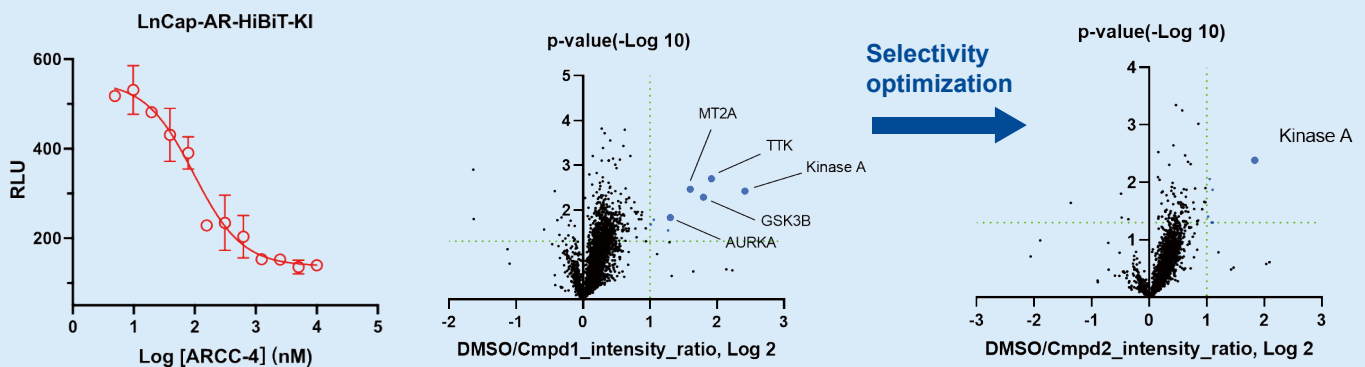
Lead Optimization
PCC

- DELT
- FBDD
- AI
- Rational Design

Discovery Chemistry

- Medicinal Chemistry Expertise
- CADD/AI Support

Supported by cascade of crucial screening and characterization assays



- Multiple-interface biophysical assays for binary and ternary binding elucidation
- High efficient cell based HiBiT-Nanoluciferase—96/384 well plate screening system supporting SAR studies
- Proteomics based degradation selectivity evaluation platform, critical to de-risk potential off-target degradation and toxicity

Proved CMC Capability Supported by Dedicated Team

Problem solving capability for challenging PROTAC API: Injection

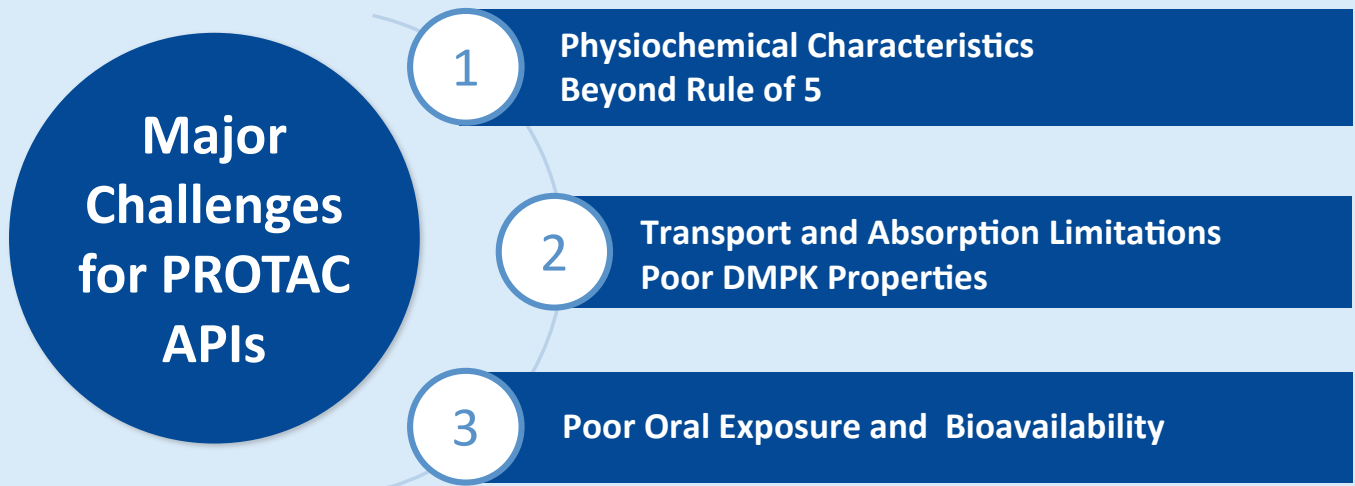
- 7 chiral centers, M.W. > 1000
- Solid state study showed no crystalline
- API produced as HCl salt in amorphous form
- Solvent residue issue
- High hygroscopicity, packing and storage difficulty
- Purification difficulty

Challenges

- 50 g demo batch (5 months)
- 120 g GLP toxic batch (1 month)
- 500 g non-GMP batch (3 months)
- 700 g GMP batch (3 months)
- IND application approved by FDA, 2022.10
- 1.5 kg GMP batch (2023.02 started)

Accomplishments

Formulation Solutions Overcoming DMPK Challenges



Formulation strategies

